



TELL ME MORE

NOT JUST "MORE OF THE SAME"

Francisco Iacobelli

f-iacobelli@u.northwestern.edu

Larry Birnbaum

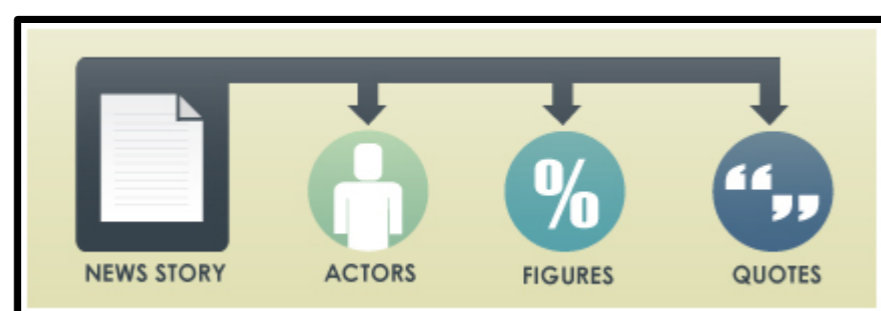
birnbaum@cs.northwestern.edu

Kristian Hammond

hammond@cs.northwestern.edu

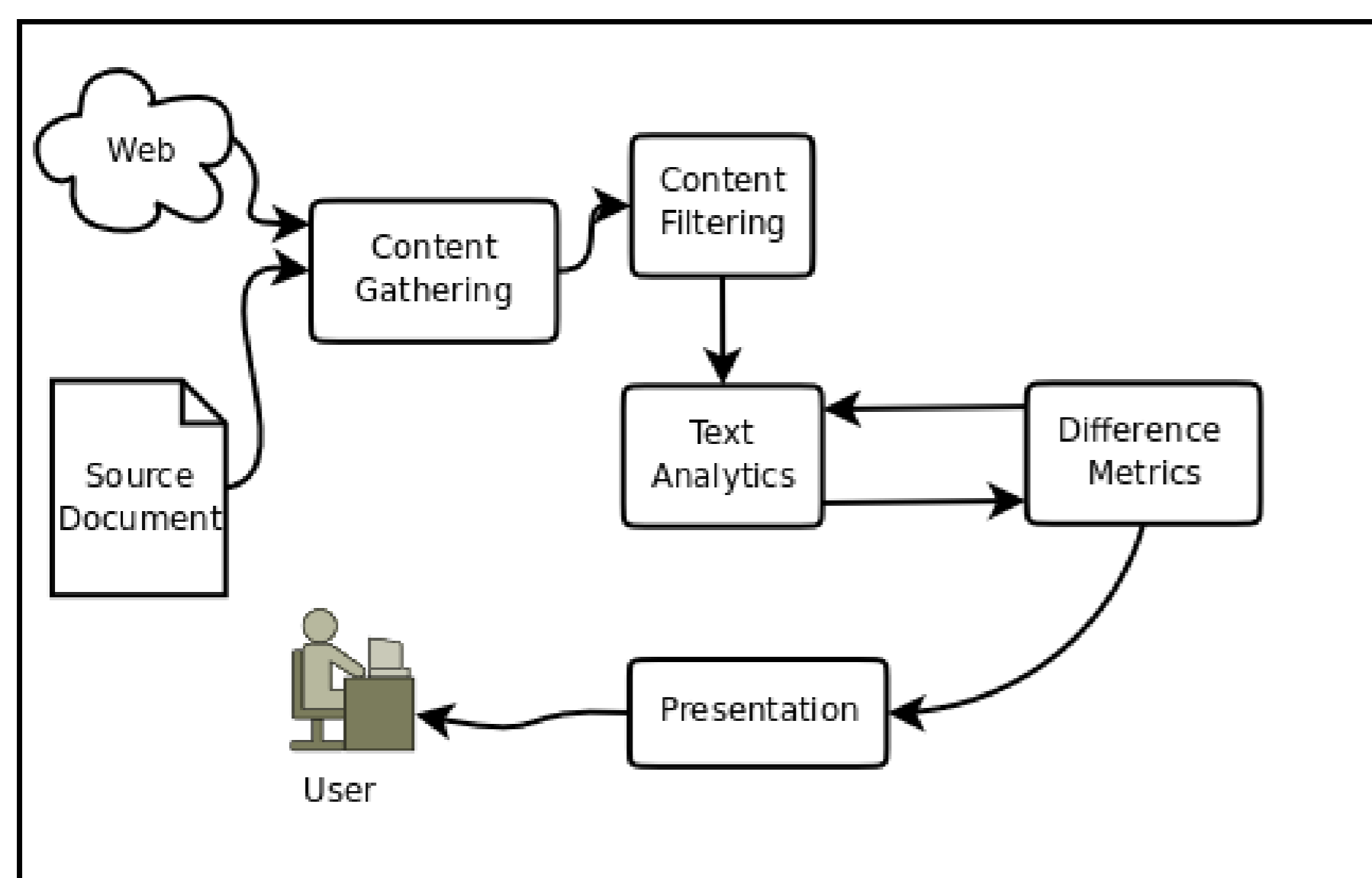
OVERVIEW

- **Richer news reading experience:** TellMeMore augments news stories by presenting snippets of additional information covered by other sources on the same news event.
- **Additional information: people, places, organizations (Actors); Quantifiers and Quotes.**



- **Editorial decisions to display new information become clear.**

ARCHITECTURE



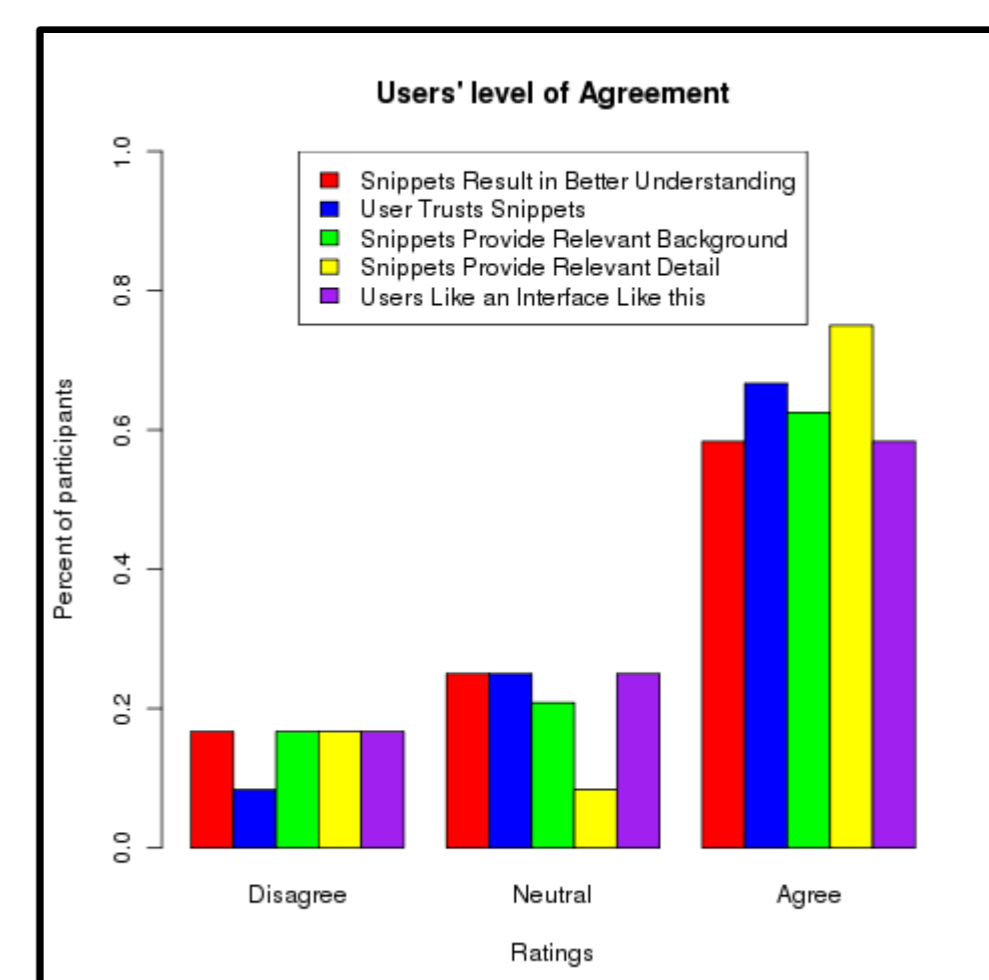
INTERFACE



EVALUATIONS

Category	P	R	F ₁	F _β
Actors	0.83	0.58	0.68	0.79
Figures	0.82	0.55	0.66	0.77
Quotes	0.93	0.57	0.71	0.87
Long Quotes	0.95	0.69	0.8	0.91

Precision, Recall and F measures of the difference detection algorithms by category



NORTHWESTERN UNIVERSITY

<http://infolab.northwestern.edu/>



intelligent information laboratory

© northwestern university